

BikeTech Suzuki MX Fuel Injection & Ignition Adjuster

PC Based - USB Interface & Windows Software

For Fuel Injected Suzuki RM-Z/RM-X 450, RM-Z/RM-X 250

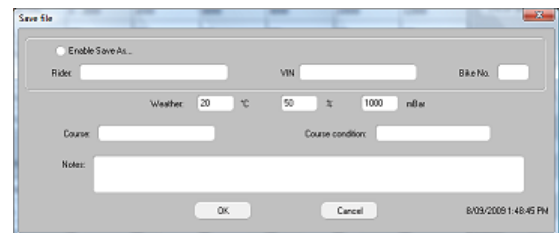
BikeTech Suzuki MX can be used to alter engine performance to suit riders, tracks and track conditions. By not degrading the original ignition accuracy, BikeTech allows the Suzuki RM-Z/X to produce the best power possible with the standard ECM.



Save and recall settings FAST:

BikeTech Suzuki MX takes control of the permutations of adjustment available on the RM-Z ECU. Imagine trying to remember and reset these variables manually! Every race. Each rider.

BikeTech Suzuki MX takes the pain out of organising the tuning for one bike or a whole race team. This is the way it should be. Fast, easy and efficient.



FEATURES

- No add-on boxes; no wiring to alter; no permanent connections to make
- No bike dismantling required - simply connect to the bike's ECU via the connector
- No possibility of adding potential wiring problems
- No ECU mapping conflicts or additional processors trying to "trick" the original ECU
- All settings can be saved to a tuning file; tested and uploaded again as required
- The fastest, easiest tuning you will ever have done!
- Essential tool for anyone racing these bikes
- Easy to install and easy to use software
- Compatible with all versions of Windows with USB ports (Inc Windows 95 OSR2, 98, Millennium, Windows 2000, XP Pro; XP Home)
- Complete with USB cable and case

Saved files include the following data:

- Bike VIN / Chassis No.
- All ECU settings at 5 throttle positions vs 6 RPM ranges
- Bike Race Number
- Full database to add notes for riders, bikes, tracks
- Race course date
- Track conditions
- Weather conditions

Recommended optional power cable available from Suzuki (Suzuki part number 36890-28H00).

Software Features at a Glance:

- Fuel Injection adjustment: -20 to +20 (-10 to +10 on 2010 models)
- Ignition Timing adjustment: -2° to +2°
- All ECU settings for 5 throttle positions vs 6 RPM ranges
- Recall individual settings by track, track conditions, weather
- Adjust individual parameters or upload new settings file
- Print each settings file with bike & rider details
- Intuitive coloured adjustment table - blue=lean; red=rich
- Large notes field to record all information